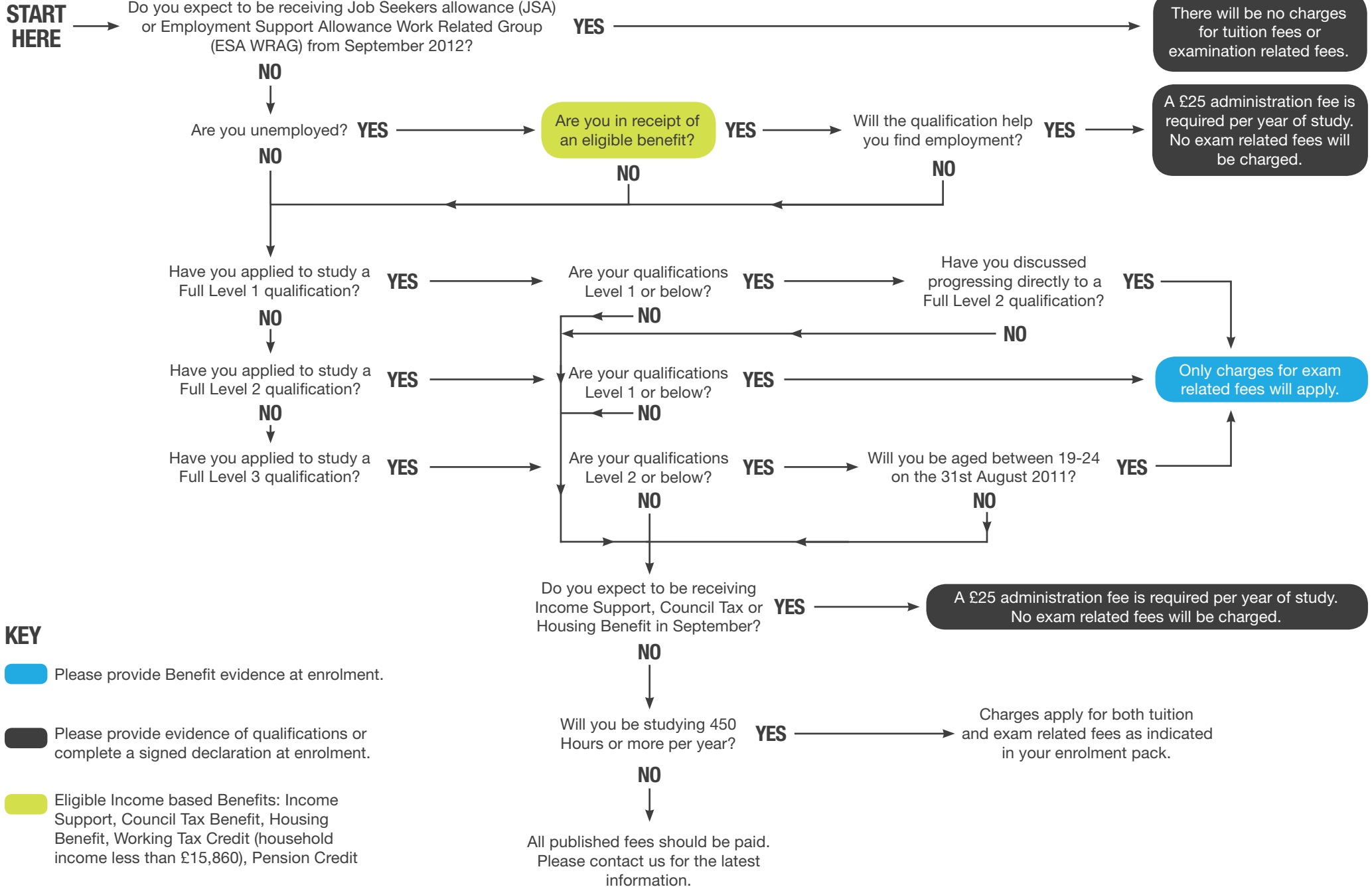


WHAT MAY YOUR PROGRAMME OF STUDY COST IN 2012 - 2013

Applies for adult learners ages 19+ on the 31st August 2012 on funded programmes



- KEY**
- Please provide Benefit evidence at enrolment.
 - Please provide evidence of qualifications or complete a signed declaration at enrolment.
 - Eligible Income based Benefits: Income Support, Council Tax Benefit, Housing Benefit, Working Tax Credit (household income less than £15,860), Pension Credit